



# KERI KŌRERO

20 MAY 2026

Kia ora, Talofa, Malo e leleli, Kia orana, Fakalofa lahi Atu, Taloha Ni, Ni sa bula, 你好, Namaste, 안녕하세요, Hola, Xin chao, السلام عليكم.

## Happy Birthday

Happy birthday to Lachlan Whittaker

Harper Wallis, Kaden Li, Zoe Kistnasami, Clara Moller, Indie Biggs, Lucas Stevens, Isaac Roberts and Flynn Franklin.

## Teacher Only Day - Friday 29 May

The school will be closed on Friday 29 May for a teacher only day on Maths with Orewa Primary School, Wainui School, Dairy Flat School and Orewa Beach School, Orewa College, Ahutoetoe School and Nukumea School.

## HBC Football Zone Day

What a great day we had last week at the Hibiscus Coast Football Zone Day at Metro Park. Silverdale School was incredibly represented, with over 100 of our Year 5 and 6 tamariki hitting the fields to showcase their skills and teamwork. The effort was high, the mahi was immense, and our students truly lived our KERI Values, on and off the field.

While every single student gave it their all, a massive congratulations goes out to our Competitive Girls Team, who played their hearts out and secured a brilliant second overall. Their determination and teamwork were inspiring to watch—tā moko, girls. A day like this cannot happen without the incredible backing of our community. A massive thank you to all the parents, caregivers, and whānau who volunteered their time to coach, referee, and cheer on our teams from the sidelines. Your support is what makes these days possible for our kids.



## Staying Safe and Smart Around Our School Gates

As our school community continues to grow, keeping our tamariki safe during the busy drop-off and pick-up times is always our top priority. We need everyone's cooperation to ensure our school gates remain safe, efficient, and stress-free for all.

Please take a moment to review our parking guidelines below so we can work together to keep the traffic flowing smoothly.

### The "Stop, Drop, and Go" Zone

Our drop-off zone bordering the sloping bank is designed for a quick turnaround. It operates as a strict Stop, Drop, and Go area during these peak times:

- Morning: 8:30am – 9:00am
- Afternoon: 2:45pm – 3:15pm

Please do not get out of your car. In the morning: Pull up, let your child safely exit, and depart immediately.

- In the afternoon: Your children will wait on the bank. The teacher on duty will safely pop your child into your vehicle so you can quickly drive away.

To prevent gridlock, there is absolutely no parking or waiting in the Stop, Drop, and Go area before 2:45pm.

### School Car Parks & Mobility Spaces

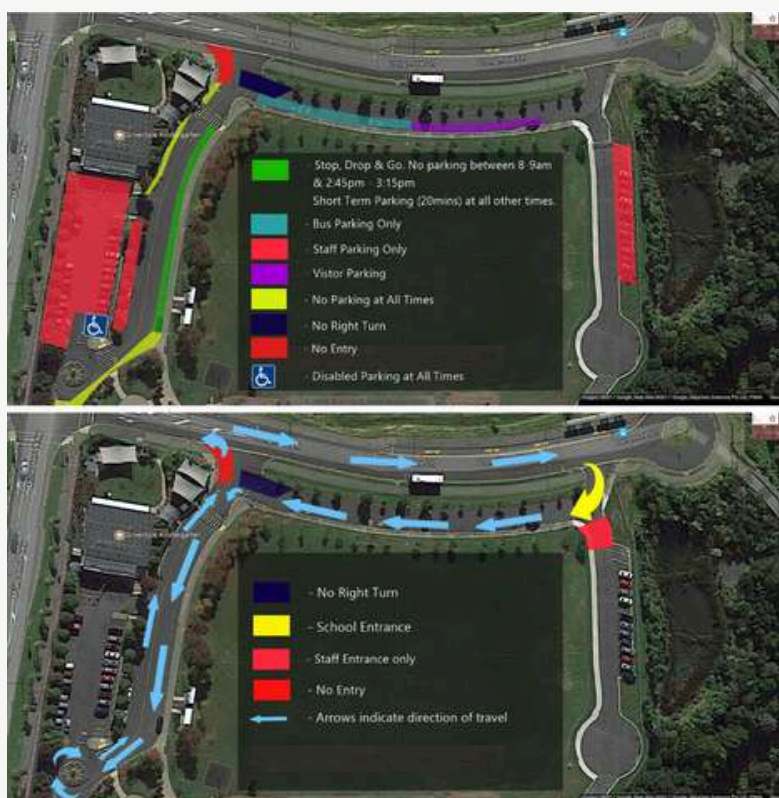
- Staff Parking Only: A friendly reminder that both of our main school car parks are reserved exclusively for staff vehicles. Please do not park in any of the school car parks.
- Dental Clinic Parking: The dental clinic car park is strictly off-limits for school drop-offs and pick-ups. Thank you for respecting their space.
- Mobility Parking: Our mobility car parks are actively monitored. Please keep these spaces clear unless you hold a valid mobility card and the cardholder is currently in the vehicle.

### Try Park and Stride

Looking to beat the school gate rush? We highly encourage families to park a short distance away from the school and walk the remaining way together.

Not only is this a fantastic way to build up you and your child's fitness, but it also aligns beautifully with our school values by reducing our collective carbon footprint. Plus, it's a lovely chance to chat about the day's mahi on the walk home!

Thank you so much for your ongoing cooperation and for keeping our Silverdale tamariki safe.



## Pink Shirt Day and Fun Run

What a great day we had for our whole-school Pink Shirt Day and Fun Run on Friday last week. The entire school looked great dressed in pink as our community came together to take a strong stand against bullying and celebrate kindness, diversity, and inclusion. The weather turned it on for us with beautiful sunny skies, but the real brightness came from the smiling faces of our tamariki. It was wonderful to see every student giving 100% effort, cheering on their peers, and embodying our KERI Values of respect/whakaute and kindness/atawhai with every single lap. A massive thank you to all of our amazing parent helpers, staff, and whānau who gave up their time to marshal the course, cheer loudly, and help keep the day running smoothly. Your energy and support made the day extra special for our kids.





# Principal Awards

Well done to the following children who received Principals awards at last week's assembly.



# Principal Awards

Well done to the following children who received Principals awards at last week's assembly.



## Principal Awards

Well done to the following children who received Principals awards at last week's assembly.



## Assembly Presenters

Congratulations to our celebration/whakanui assembly presenters at last week's assembly.



## KERI Awards

Well done to the following children who received Caught by KERI awards at last week's assembly.

|                              | <b>Team Te Ōhanga</b> | <b>Team Kiwi</b> | <b>Team Pūkeko</b> | <b>Team Tūt</b> |
|------------------------------|-----------------------|------------------|--------------------|-----------------|
| <b>Kindness Atawhai</b>      | Owen                  | Armaan           | Unnati             | Huxley          |
| <b>Excellence Hiranga</b>    | Sadie                 | Mason            | Mia                | Mihika          |
| <b>Respect Whakaute</b>      | Know                  | Hope             | Ayla               | Tiffany         |
| <b>Integrity Ngākau pono</b> | Isabel                | Sifia            | Grayson            | Arthur          |



## Auckland FC Blue and Black Dress-Up Day

The excitement is building across the school as our very own Auckland FC has made it to the A-League Grand Final this weekend! They will be taking on Sydney FC in what promises to be an absolute thriller of a match. To show our support for the team, we are holding a special Blue and Black Supporters Day on Friday 22 May.

Instead of their usual school uniform, we encourage all children to come to school dressed in blue and black clothing on Friday. Whether it's a favorite shirt, a scarf, or even some fun hair ribbons, let's get behind the team!

No gold coin donation is required for this dress-up day, it is purely for fun and to celebrate this fantastic sporting achievement.



### **After-School Supervision**

A quick but important reminder regarding the safety and supervision of our children at the end of the school day.

School finishes at 3:00pm, and our staff supervision concludes at this time. From 3:00pm onwards, children remaining on the school grounds must be directly supervised by a parent, caregiver, or an authorised adult.

The school is responsible for student safety during school hours, concluding at 3:00pm. Please ensure you have made arrangements for your child to be collected promptly at 3:00pm, or that they are enrolled in an appropriate after-school care programme.

Thank you for your cooperation in keeping our school environment safe for everyone after the bell rings.

### **School Uniform**

With the cooler winter weather here, please ensure all extra layers, fleece jackets, and beanies are clearly named so we can return them to their rightful owners if lost.

### **Enrolment**

If you have a younger child turning five later this year or next year, please pop into the office or visit our website to complete your enrolment form early. This heavily assists us with our classroom planning.

### **Teacher Only Day Friday 29 May**

School will be closed on Friday 29 May due to teacher only day. During this day our staff will be doing numeracy professional development with the schools in our area.

Kelly Club will be operating on this day. To book go to [www.kellyclub.co.nz](http://www.kellyclub.co.nz)

### **Kings Birthday**

The school will be closed on Monday 1 June due to the Kings Birthday public holiday.

### **Kpop Disco Night Friday 12 June**

Junior Disco (Years 0, 1, 2 and 3) - 5.00pm - 6:30pm

Senior Disco (Years 4, 5, and 6) - 7.00pm - 8:30pm

Tickets \$10 and \$5 prepaid money cards available to purchase on Kindo under PTA fundraiser.

Prepaid money cards are very helpful for our younger students, multiple cards can be purchased.

Cut off purchasing from Kindo on Sunday 7 June.

Cash is also accepted at the disco, but no eftpos.

Items available at the disco include; ice creams, lollies, pizza, drinks, ice blocks, glow toys, photobooth, face painting, and a nail bar.

Due to health and safety reasons, no non Silverdale school students are allowed, including siblings under 5 years old.

Due to security reasons, after the disco, parents must collect their child from inside the school hall.

No refunds will be provided for unused prepaid cards and tickets for non attendance.

We need parent helpers please. The disco relies on parent help on the stalls to make it fun for the children. You can help with one or both discos. Stalls include: Face painting (Neon Dots and lines), Photo booth, Lollies, Ice creams, Kitchen (Pizza and drinks), Nail bar (simple), Glow toys

If you can help please email the PTA on [silverdalepta@gmail.com](mailto:silverdalepta@gmail.com)

If you have any questions, please contact the PTA directly on [silverdalepta@gmail.com](mailto:silverdalepta@gmail.com)

PTA EVENT

# K-POP DISCO

Friday 12 June 2026

Junior disco: 5pm - 6:30pm  
Senior disco: 7pm - 8:30pm

Food | Drinks | Ice-cream | Lollies  
Glow Toys | Nail bar | Face Paint | Photobooth

Tickets \$10  
\$5 prepaid disco money on Kindo

Parents are welcome to drop and leave children if they are confident by themselves, but they **MUST** be escorted to and from the school hall by an adult.

Strictly for Silverdale School Students **ONLY**.  
No pre-schoolers. No refunds for unused prepaid cards or non attendance.



### **Country Show Day**

Silverdale PTA are looking for sponsors for our biggest fundraiser, Country Show Day - 17 October 2026. If you are interested in being either a Gold, Silver or Bronze sponsor, please contact the PTA via email [silverdalepta@gmail.com](mailto:silverdalepta@gmail.com) and we will forward the sponsorship package.

### **PTA comedy quiz night - Save the date - Friday 7 August 7.00pm, Joes Garage Silverdale**

Thanks to our amazing gold sponsor Joes Garage Silverdale, Comedy Quiz Night R18 returns. Joes Garage Silverdale. More information to follow mid June.



## Garden to Table

Garden To Table

# Bake Sale Extravaganza!

"Help us grow! We are hosting a bake sale to fund our upcoming Garden to Table initiatives. Your support helps us purchase new gardening tools, upgrade our kitchen equipment, and maintain our sustainable projects—including our brand-new worm composting system!"

Thursday | 11:00 AM  
May 21 | to 12.30 PM  
Outside the School Hall

"Treat yourself to some scrumptious delights for just a gold coin donation! Whether big or small, your contribution helps us grow and brings us one step closer to our Garden to Table goals."

# Kelly Club



A FUN PROGRAMME  
THAT KIDS LOVE!

Friday 29 May

## TEACHER ONLY DAY PROGRAMME

**OSCAR  
PROGRAMME  
SUBSIDIES  
AVAILABLE!**

\*Conditions apply

### SILVERDALE SCHOOL

Join us for a Topsy Turvy day where everything is backwards and upside down! We'll have crazy fun with wacky games like Wacky Races and Reverse Netball. Check out our mixed-up cooking making Upside Down goodies, and enjoy creative crafts.

**Full Day:** \$60  
7:00am – 6:00pm

**School Day:** \$50  
8:30am – 3:00pm

**Half Day:** \$41  
7:00am – 12:30pm or 12:30pm – 6:00pm

Contact: Ansua Coester

Email: [silverdale@kellyclub.co.nz](mailto:silverdale@kellyclub.co.nz)

Phone: 021 120 6285

Facebook: @KellyClubSilverdale

**BOOK ONLINE NOW AT** [www.kellyclub.co.nz](http://www.kellyclub.co.nz)

# Kelly Club



**Contact:** Programme Coordinator  
**Phone:** 021 120 6285  
**Email:** silverdale@kellyclub.co.nz  
**Website:** kellyclub.co.nz/silverdale



## KELLY CLUB SILVERDALE UPDATE

### What's been happening...

Wow! What a lot we learned about Sign Language! We spelled our names, played Sign Bingo, and enjoyed fun games only using body language and hand signs! The kids loved playing all these games and still had fun with their favourites like playdough, building cup towers and constructing masterpieces from lego!



### What's happening next week!

| KELLY CLUB               |   | THEME: Pirate Party!<br>Term 2, Week 6, 25th May 2026 |  |  |  |  | Weekly Activities Plan<br>Kelly Club Silverdale |  |
|--------------------------|---|---|--|--|--|--|---|--|
|                          | Monday  | Tuesday   | Wednesday  | Thursday                                 | Friday   |  |   |  |
| 7:00 - 8:15 am           | Bubble Painting & Structured Free Time            | Staff Choice & Structured Free Time                   | Paper Creations & Structured Free Time           | Board Games & Structured Free Time       | Who am I? & Structured Free Time               |  |   |  |
| 8:15 - 8:30 am           | Games: Hoopball                                   | Games: Fly Snail/Fly                                  | Games: Line Tag                                  | Games: Red Light Green Light             | Games: Traffic                                 |  |   |  |
| 9:00 - 9:10 am           | Sign In & Free Time                               | Sign In & Free Time                                   | Sign In & Free Time                              | Sign In & Free Time                      | Sign In & Free Time                            |  |   |  |
| 9:10 - 9:30 pm           | Intro & Afternoon Tea<br>Free Bubble Cake & Fruit | Intro & Afternoon Tea<br>Sammies & Fruit              | Intro & Afternoon Tea<br>Cheese Toasties & Fruit | Intro & Afternoon Tea<br>Sammies & Fruit | Intro & Afternoon Tea<br>Sausage Rolls & Fruit |  |   |  |
| 9:30 - 9:45 pm           | Games: Top Ball                                   | Games: Squirrel Tag                                   | Games: Slush in the Mud                          | Games: Guess Who?                        | Games: Charades                                |  |   |  |
|                          | <b>CRAFT</b><br>Treasure Chest                    | <b>GAME</b><br>Pirates Treasure                       | <b>DISCOVERY</b><br>Salt Dough Doubloons         | <b>SPORT</b><br>Pirate Basketball        | <b>DOODLING</b><br>Scurry Dogs                 |  |   |  |
| Team A<br>9:45 - 4:30 pm |   |   |  |  |  |  |   |  |
|                          | <b>GAME</b><br>Pirates Treasure                   | <b>DISCOVERY</b><br>Salt Dough Doubloons              | <b>SPORT</b><br>Pirate Basketball                | <b>CRAFT</b><br>Pirate Hooks             | <b>DOODLING</b><br>Scurry Dogs                 |  |   |  |
| Team B<br>9:45 - 4:30 pm |   |   |  |  |  |  |   |  |
| 4:30 - 4:35 pm           | Tidy Up   | Tidy Up   | Tidy Up  | Tidy Up                                  | Tidy Up  |  |   |  |
| 4:35 - 4:50 pm           | Snack Time<br>Pappas                              | Snack Time<br>Biscuits                                | Snack Time<br>Crackers                           | Snack Time<br>Veggie Chips               | Snack Time<br>Baking                           |  |   |  |
| 4:50 - 5:15 pm           | Homework & Quiet Time                             | Homework & Quiet Time                                 | Homework & Quiet Time                            | Homework & Quiet Time                    | Homework & Quiet Time                          |  |   |  |
| 5:15 - 6:00 pm           | Games: Walker Stay It & Projects                  | Games: Wilma's Wally? & Projects                      | Games: Slush, Islands & Fish & Projects          | Games: Simon & Wilma & Projects          | Games: Slide Tag & Projects                    |  |   |  |

E. silverdale@kellyclub.co.nz

kellyclub.co.nz/silverdale

P. 021 120 6285



**BOOK ONLINE NOW AT** [www.kellyclub.co.nz](http://www.kellyclub.co.nz)

# Thank you to our Newsletter Sponsors

**BAYLEYS**

**ALTOGETHER  
BETTER**



**Golstruct Homes**

*Open the Door to Excellence*

**KipMcGrath** EDUCATIONCENTRES

**ENGLISH & MATHS  
TUTORING**



Now open in

**Orewa**

Qualified Teachers

Primary and Secondary


Personalised Learning Programs

Fun and Engaging Sessions

Book a free assessment today

Tamariki Plaza, 1 - 19 Cammish Lane, Orewa, 0931, Auckland

 [www.kipmcgrath.co.nz/orewa](http://www.kipmcgrath.co.nz/orewa)

 021 0234 1959

# Thank you to our Newsletter Sponsors



**FUN EDUCATIONAL SKILLS FOR LIFE**

**Realisticus<sup>®</sup>**  
Art Academy Love to Draw

**Realistic Art Classes for Kids**

**FANTASTIC Realistic ART CLASSES for Kids Ages 5-13**  
**Silverdale School &**  
**KingsWay Senior Campus**

**MONDAY, WEDNESDAY & FRIDAY (Silverdale School)**

**After School: 3:15pm & 4:25pm**

**THURSDAY (KingsWay Senior)**

**After School: 3:30pm & 4:30pm**

**Join Us! Love to Draw!**

**[ArtAcademy.co.nz](http://ArtAcademy.co.nz)**



# Community Notices

## KIA ORA KIDS AT HOME CHILDCARE



Our team of highly qualified educators offer a nurturing, safe, and engaging learning environment designed to support your child to thrive and develop a life long passion for learning. With low ratios, our educators can guarantee that each child receives the care and attention they truly deserve.

### OUR SERVICE:

- ✓ Small groups of 4 children
- ✓ WINZ & 20 hours ECE subsidy
- ✓ Support from registered teachers
- ✓ Free playgroups



### ENQUIRE TODAY!

- ☎ 027 389 2888
- ✉ info@kiaorakids.co.nz
- 🌐 www.kiaorakids.co.nz

Support ♥ Educate ♥ Inspire ♥

## TechWeek 2026

Expand Your Child's Horizons!

# FREE

Beginner to advanced coding lessons available at 4pm, 5pm and 6pm every day during TechWeek.

Students learn a lot in one hour!  
Ages: 9&10, 11&12, 13&14, 15 to adult

Book now at [codingnz.com/freeactivity](http://codingnz.com/freeactivity)



## COAST BASKETBALL

U12 & U14  
BOYS & GIRLS

### JNR REP TRIALS



U12'S

2017, 2016, 2015  
BORN PLAYERS

U14'S

2013 & 2014  
BORN PLAYERS

TRIAL #1 SATURDAY 6TH JUNE

TRIAL #2 SUNDAY 7TH JUNE

TRIAL #3 \* THURSDAY 11TH JUNE

TRIAL #4 \* SATURDAY 13TH JUNE

### TRIAL INFORMATION

Click on the link for all trial information

REGISTER VIA THE LINK OR SCAN THE QR CODE\*



[www.hibiscuscoast.basketball](http://www.hibiscuscoast.basketball)

Players must be registered to be considered for selection